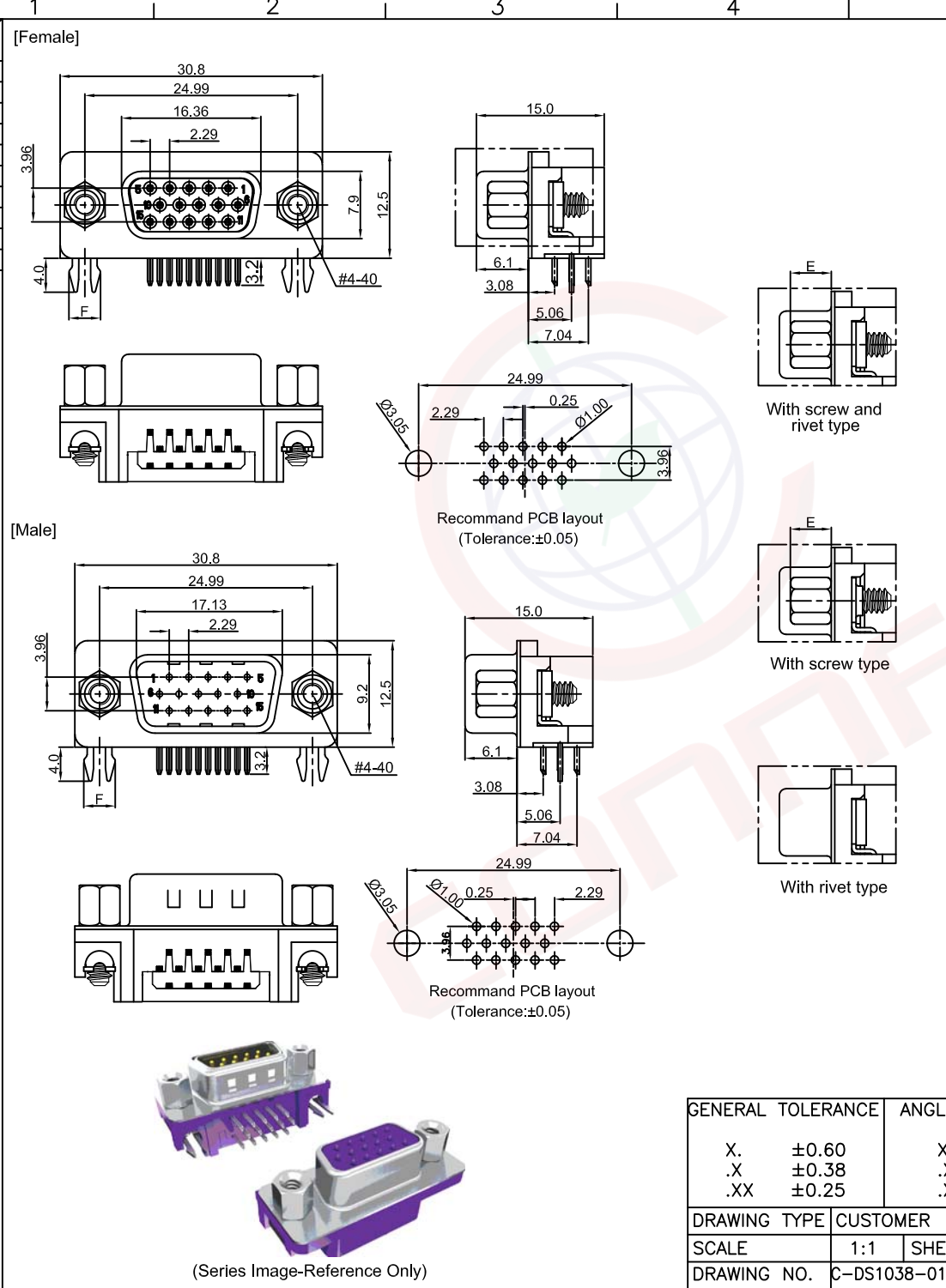


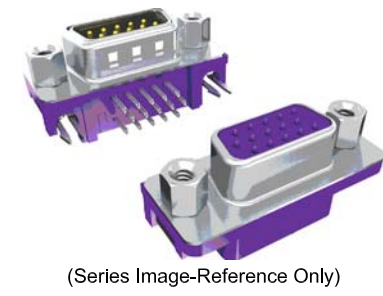
The information provided herein is from CONNELY Electronic Co., Ltd. and is confidential. Any disclosure to a party other than the recipient is prohibited. The intellectual properties and its rights contained herein, including but not limited to, trademarks, patents, copyrights, trade secrets, and technical know-how, are owned exclusively by CONNELY or its affiliates. Unauthorized use or reproduction of this document in any format or manner. CONNELY may enforce its intellectual property rights at its own discretion; failures or delays to exercise such rights does not constitute a waiver of such rights.



REV.	DESCRIPTION	DRAWN	CHECKED	APPROVED
A	NEW RELEASE	YCH 06/12/08'		LJC 06/12/08'
B	DRAWING UPDATE	JLZ 10/07/20'		
C	DRAWING UPDATE	JLZ 06/28/22'		

NOTES:

- Electrical characteristics:
 - Contact resistance: 20mΩ Max. Initial.
 - Dielectric withstanding voltage: 500V AC(rms) for 1 minute.
 - Insulation resistance: 1000MΩ Min.
- Environment characteristics:
 - Temperature range: -40°C~+105°C.
- Materials:
 - Insulator:PBT+Glass fiber
 - Shell:Steel
 - Contact:Copper alloy
- Product number code:
 DS1038-01 - X X X X X X X X
 - Screw DIM. E: 4: 4.80mm 5: 5.80mm
 - Board lock DIM. F: 7: 3.70mm
 - Screw type: A:With screw type, B:With rivet type, C:With screw and rivet type, D: Rivet type with screws in bulk package
 - Contact plating: St: Selective gold flash, 8: Full gold flash, 6: Full tin
 - Shell plating: N: Nickel T: Tin
 - Color of housing: B: Black U: Blue C: Blue(PC99)
 - Connector type: M: Male F: Female
 - No. of contact: 15



GENERAL TOLERANCE		ANGLE TOLERANCE	
X.	±0.60	X.	±5°
.X	±0.38	.X	±3°
.XX	±0.25	.XX	±2°

DRAWING TYPE	CUSTOMER		
SCALE	1:1	SHEET	1 OF 1
DRAWING NO.	C-DS1038-01-XXXXXXX-C		

PROJECTION		TITLE	D-SUB H.D R/A 3.08mm Type	
UNITS	mm	SERIES	DS1038-01 SERIES	

晨翔电子有限公司
CONNFLY CONNELY ELECTRONIC CO. LTD