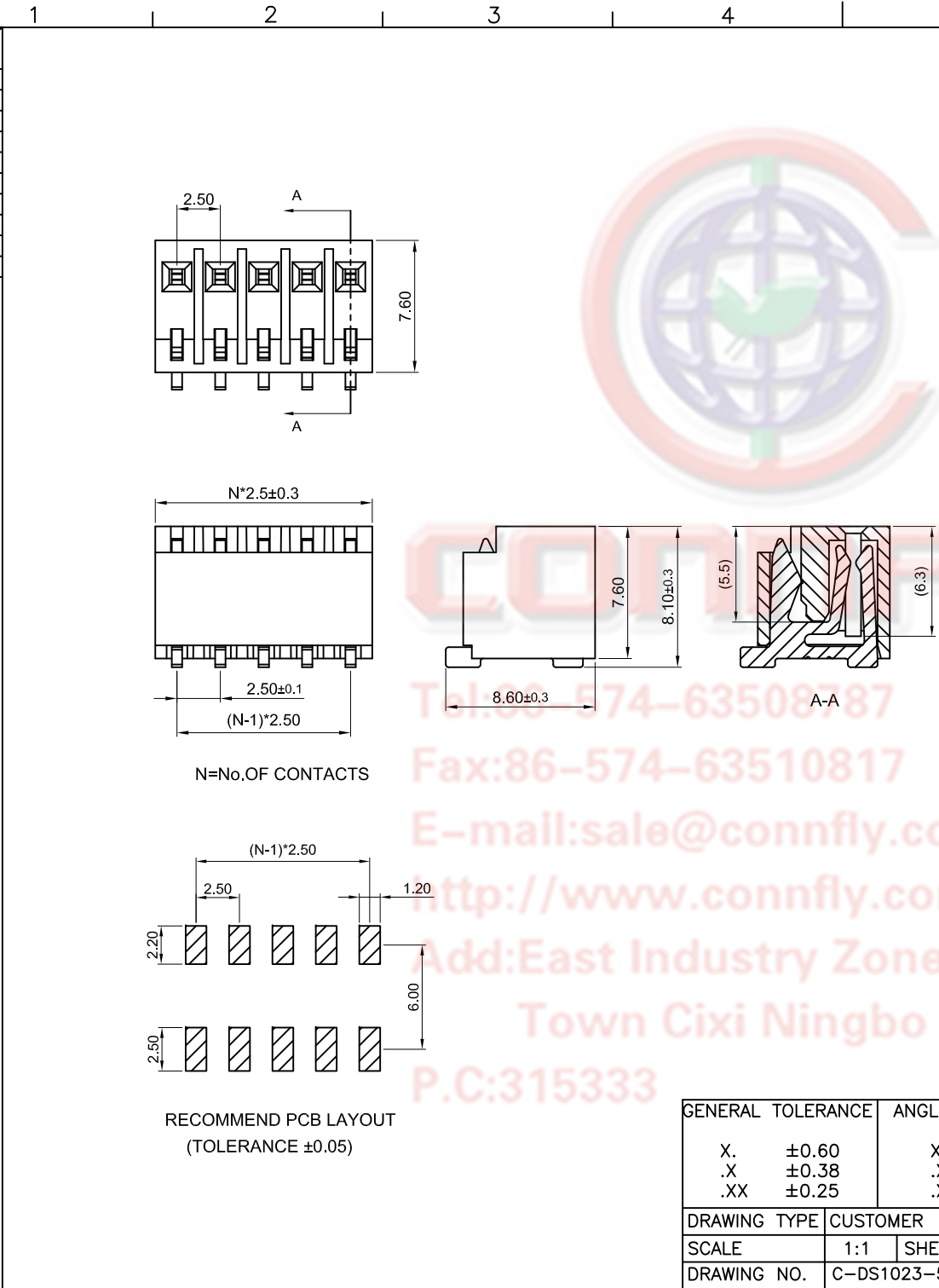


The information provided herein is from CONNELY Electronic Co., Ltd. and is confidential. Any disclosure to a party other than the recipient is prohibited. The intellectual properties and its rights contained herein, including but not limited to, trademarks, patents, copyrights, trade secrets, and technical know-how, are owned exclusively by CONNELY or its affiliates. Unauthorized use of this information in any format or manner. CONNELY may enforce its intellectual property rights at its own discretion; failures or delays to exercise such rights does not constitute a waiver of such rights.



REV.	DESCRIPTION	DRAWN	CHECKED	APPROVED
A	NEW RELEASE	JLZ 03/01/18'		

- NOTES:**
- CHARACTERISTICS:**
 - CONTACT RESISTANCE: 20mΩ Max.
 - DIELECTRIC WITHSTANDING VOLTAGE: 600V AC(rms) FOR 1 MINUTE.
 - INSULATION RESISTANCE: 1000MΩ Min.
 - CURRENT RATING:3A.
 - ENVIRONMENT CHARACTERISTICS:**
 - TEMPERATURE: -40°C~+105°C.
 - MATERIALS**
 - CONTACT MATERIAL: COPPER ALLOY.
 - CONTACT PLATING: TIN OR GOLD.
 - INSULATOR MATERIALS: HIGH TEMP. UL94 V-0,GRAY OR BLACK.
 - PRODUCT NUMBER CODE:**

DS1023-50 - X X X X X X X

- MYLAR SUPPORT
- S: W/ MYLAR
- X: W/O MYLAR
- PACKING TYPE
- B: TUBE
- R: TAPE ON REEL
- HOUSING COLOR
- A: GRAY
- B: BLACK
- CONTACT PLATING
- 6: FULL TIN
- 8: FULL GOLD FLASH
- MOUNTING TYPE
- S: SMT TYPE
- CONNECTOR TYPE
- S: SOCKET
- No.OF CONTACTS
- 02~10

GENERAL TOLERANCE		ANGLE TOLERANCE		PROJECTION		TITLE	2.50mm Female Header SMT
X.	±0.60	X.	±5°	UNITS	mm	L Type H=7.6mm	
.X	±0.38	.X	±3°	SHEET SIZE	A4	SERIES	DS1023-50 SERIES
.XX	±0.25	.XX	±2°	晨翔电子有限公司 CONNELY CONNELY ELECTRONIC CO. LTD			
DRAWING TYPE		CUSTOMER					
SCALE		1:1	SHEET 1 OF 1				
DRAWING NO.		C-DS1023-50-XXXXXXX-A					