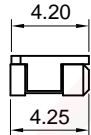
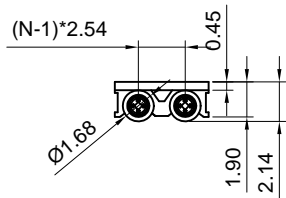
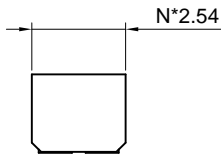
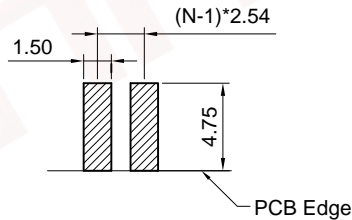
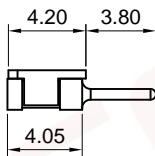
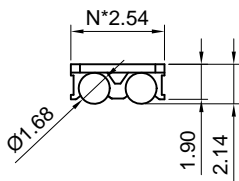
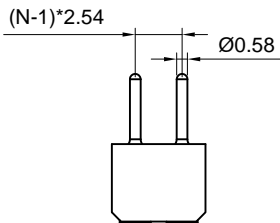


The information provided herein is from CONNELY Electronic Co., Ltd. and is confidential. Any disclosure to a party other than the recipient is prohibited. The intellectual properties and its rights contained herein, including but not limited to, trademarks, patents, copyrights, trade secrets, and technical know-how, are owned exclusively by CONNELY or its affiliates. Unauthorized use or reproduction of any part of this document is strictly prohibited. CONNELY may enforce its intellectual property rights at its own discretion, failures or delays to exercise such rights does not constitute a waiver of such rights.

# Female



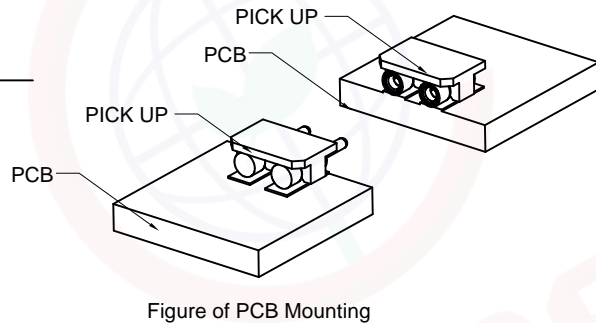
# Male



Recommend PCB layout  
Tolerance:±0.05mm

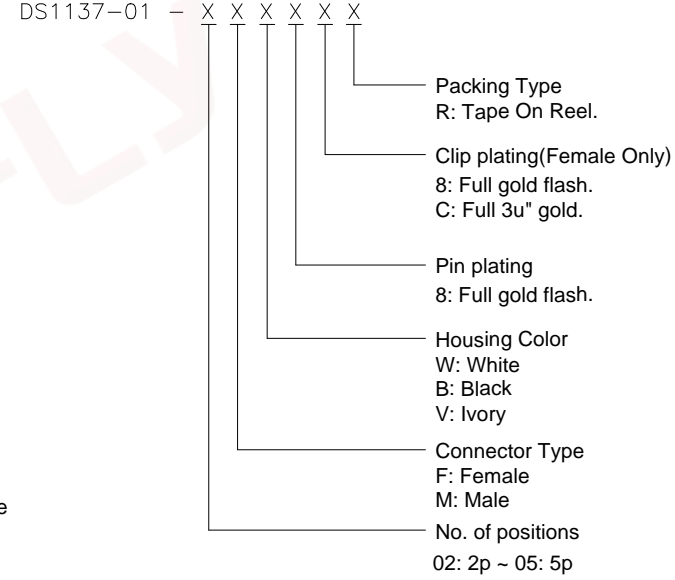


(Series Image-Reference Only)



REV.	DESCRIPTION	DRAWN	CHECKED	APPROVED
A	NEW RELEASE	LJC 11/18/11'		
D	DRAWING UPDATE	JLZ 12/08/21'		

- NOTES:
- Materials:
    - Insulator: High Temperature 260°C,UL94-V0 (For White Only UL94-HB Rated).RoHS,REACH compliance.
    - Pin: Copper Alloy, Plating Tin or Gold.
    - Clip: Beryllium Copper, C17200,Full Gold plating.
  - Specifications:
    - Temperature Range: -55~+125°C.
    - Contact Resistance: 10mΩ maximum.
    - Insulation Resistance: 1000MΩ minimum.
    - Dielectric Withstanding Voltage: 500V AC 1 minute.
    - Voltage Rating: 24V AC/DC.
    - Current Rating: 3A max per pin.
    - Application insert pin: Ø0.381~Ø0.635mm.
    - Resistance to soldering heat: 260°C,3-5seconds.
    - Durability: 1000 cycles min.
  - Product Number Code:



GENERAL TOLERANCE		ANGLE TOLERANCE		PROJECTION		TITLE
X.	±0.60	X.	±5°		mm	2.54mm LED Series Plug & Socket SMT Type Connector H=2.14mm
.X	±0.38	.X	±3°			
.XX	±0.25	.XX	±2°			
DRAWING TYPE		CUSTOMER		SHEET SIZE		
SCALE		1:1		A4		
DRAWING NO.		C-DS1137-01-XXXXXX-D		SERIES		
				DS1137-01 SERIES		

**晨翔电子有限公司**  
CONNFLY CONNELY ELECTRONIC CO., LTD